



Wohr Parking Systems Australia

Project Report

Zenith Rise, Bundoora, Victoria

Parklift 450

www.wohr.com.au | 1300 964 728

Architect: ClarkeHopkinsClarke
Developer: Dealcorp
Builder: Alliance CG (CRC Group)

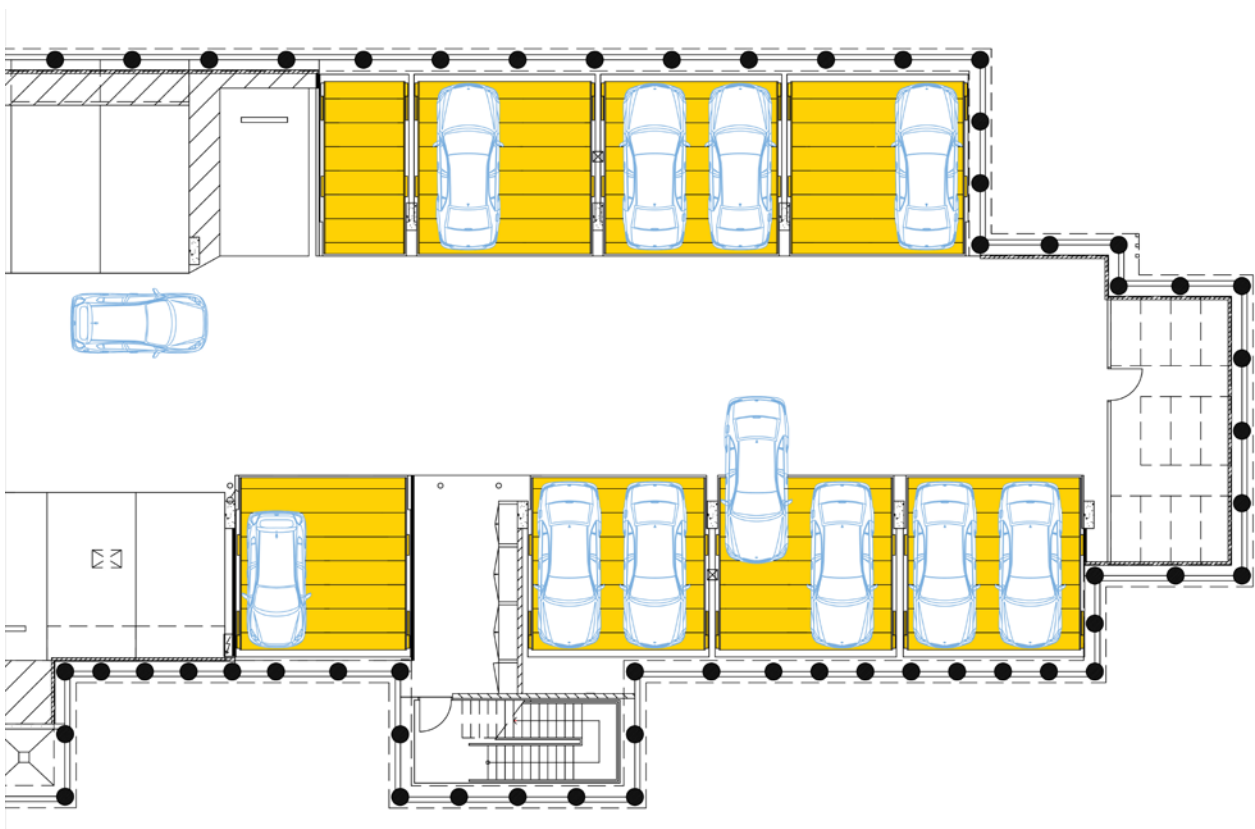


Aspire, Zenith rise is a truly unique project. 20 stunning apartments housed within two double-storey heritage listed brick buildings seamlessly intergrated with 19 new, luxury townhouses

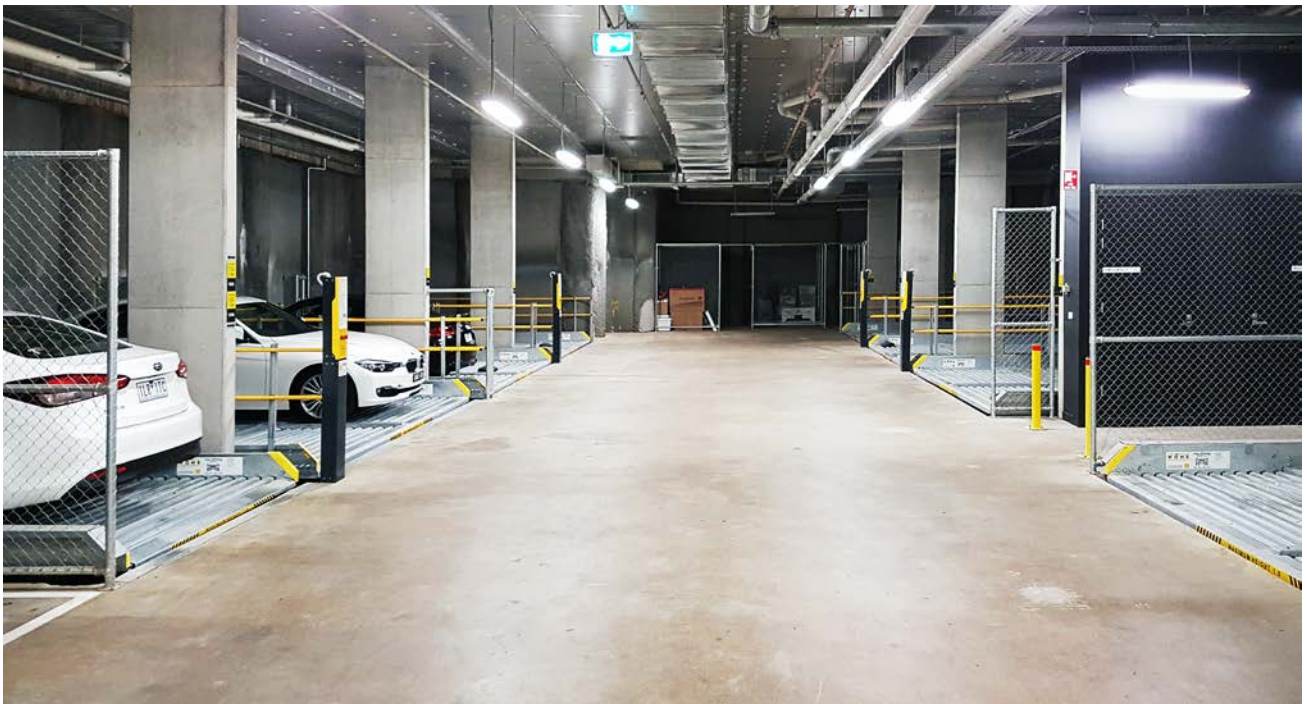
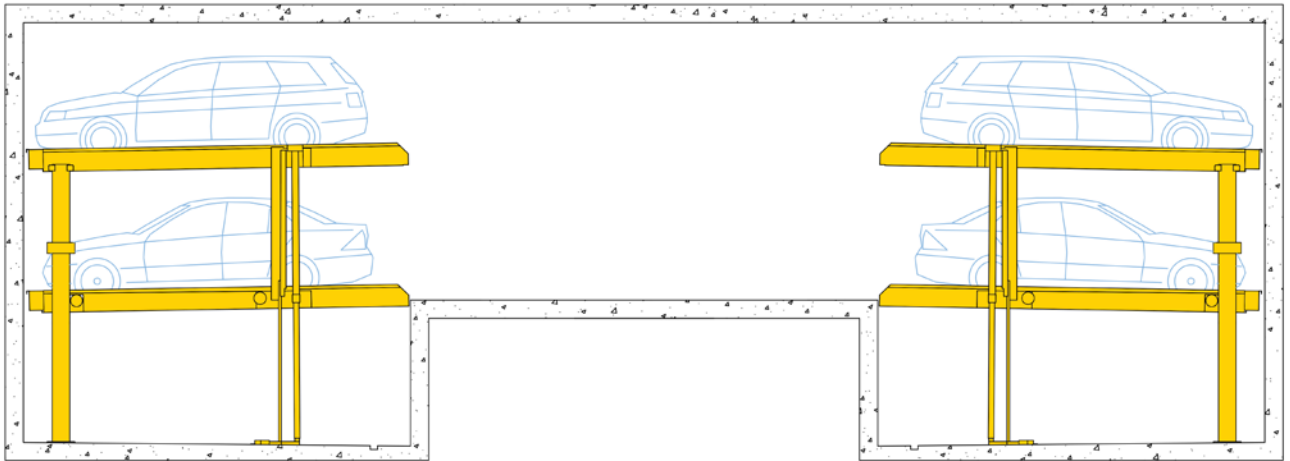


The perfect mix of old and new is on display at Aspire with the heritage windows, facade and soaring ceiling heights mixing with the latest in contemporary apartment living.

By utilising the **Parklift 450** systems, ClarkeHopkinsClarke was able to add 15 additional car spaces into the traditional basement without the need to excavate an additional basement level.



The Parklift 450 is available in single or double width platforms to accommodate 2 or 4 cars respectively. By using a pit, each car is independently accessible at any time, accessed simply by lifting or lower the system as required.





The users operate the system via an easy to use key switch, which is hold-to-run for the safety of vehicles and pedestrians in the area.

The platforms include wheelstops to ensure correct positioning of vehicles and each user is inducted into the safe operation of the system.





All parking equipment is designed and manufactured to exacting standards in Germany by Wöhr Autoparksysteme and installed and maintained by local subsidiary Wöhr Parking Systems Australia to comply with AS5124

For more information, and to contact us, visit www.wohr.com.au

